

FIRST FLOOR - COMMON AREA
1,060 SQ. FT.

UNIT 100 - FIRST FLOOR
838 SQ. FT.

UNIT 101 - FIRST FLOOR
922 SQ. FT.

UNIT 102 - FIRST FLOOR
929 SQ. FT.

UNIT 103 - FIRST FLOOR
927 SQ. FT.

UNIT 104 - FIRST FLOOR
685 SQ. FT.

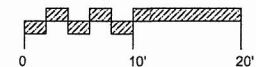
UNIT 105 - FIRST FLOOR
926 SQ. FT.

COMMON AREA - FLOOR AREA	
BASEMENT	6,400 SQ. FT.
FIRST FLOOR	1,060 SQ. FT.
SECOND FLOOR	992 SQ. FT.
THIRD FLOOR	992 SQ. FT.
FOURTH FLOOR	963 SQ. FT.

TOTAL: 10,407 SQ. FT.

FLOOR PLANS

Scale: $\frac{3}{16}" = 1'-0"$



= Common Area

= Unit Access

= Unit Separation Wall

Reserved for Registry Use

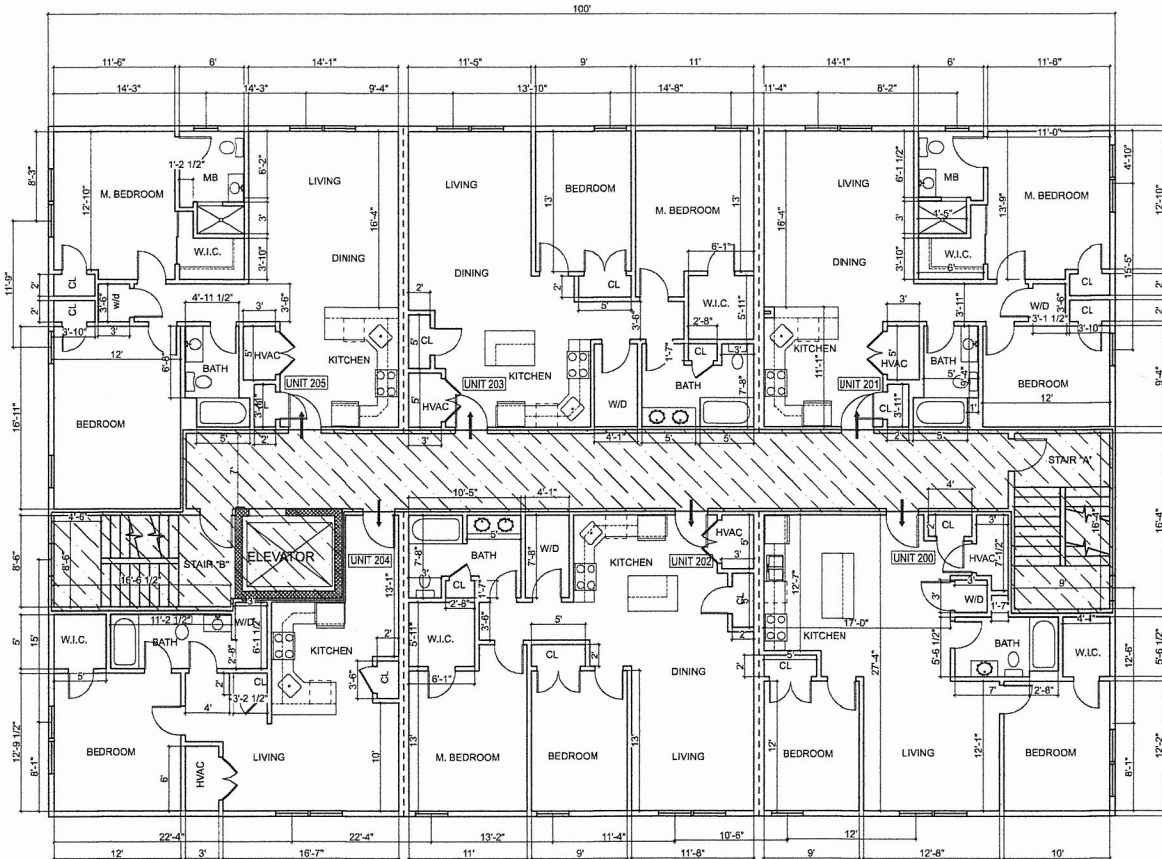
FIRST FLOOR

SCALE: $\frac{3}{16}" = 1'-0"$

693 Western Ave Condominium

693 Western Ave, Lynn, Massachusetts 01905
August 29, 2019

I hereby certify that this plan shows the unit designation of the unit being conveyed and of immediately adjoining units, and that it fully and accurately depicts the layout of the unit, its location, unit number and dimensions of the units numbered 100, 101, 102, 103, 104, 105, 200, 201, 202, 203, 204, 205, 300, 301, 302, 303, 304, 305, 401, 402, 403, 404, & 405 as built, approximate area, main entrance and immediate common area to which it has access, in building at 693 Western Ave as built, and that this plan has been prepared in accordance with the Registry of Deeds and the Commonwealth of Massachusetts.



SECOND FLOOR

SCALE: $\frac{3}{16}" = 1'-0"$

SECOND FLOOR - COMMON AREA
992 SQ. FT.

UNIT 200 - SECOND FLOOR
838 SQ. FT.

UNIT 201 - SECOND FLOOR
926 SQ. FT.

UNIT 202 - SECOND FLOOR
929 SQ. FT.

UNIT 203 - SECOND FLOOR
927 SQ. FT.

UNIT 204 - SECOND FLOOR
685 SQ. FT.

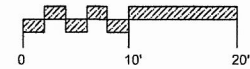
UNIT 205 - SECOND FLOOR
1,021 SQ. FT.

COMMON AREA - FLOOR AREA
BASEMENT 6,400 SQ. FT.
FIRST FLOOR 1,060 SQ. FT.
SECOND FLOOR 992 SQ. FT.
THIRD FLOOR 992 SQ. FT.
FOURTH FLOOR 963 SQ. FT.

TOTAL: 10,407 SQ. FT.

FLOOR PLANS

Scale: $\frac{3}{16}" = 1'-0"$



= Common Area

= Unit Access

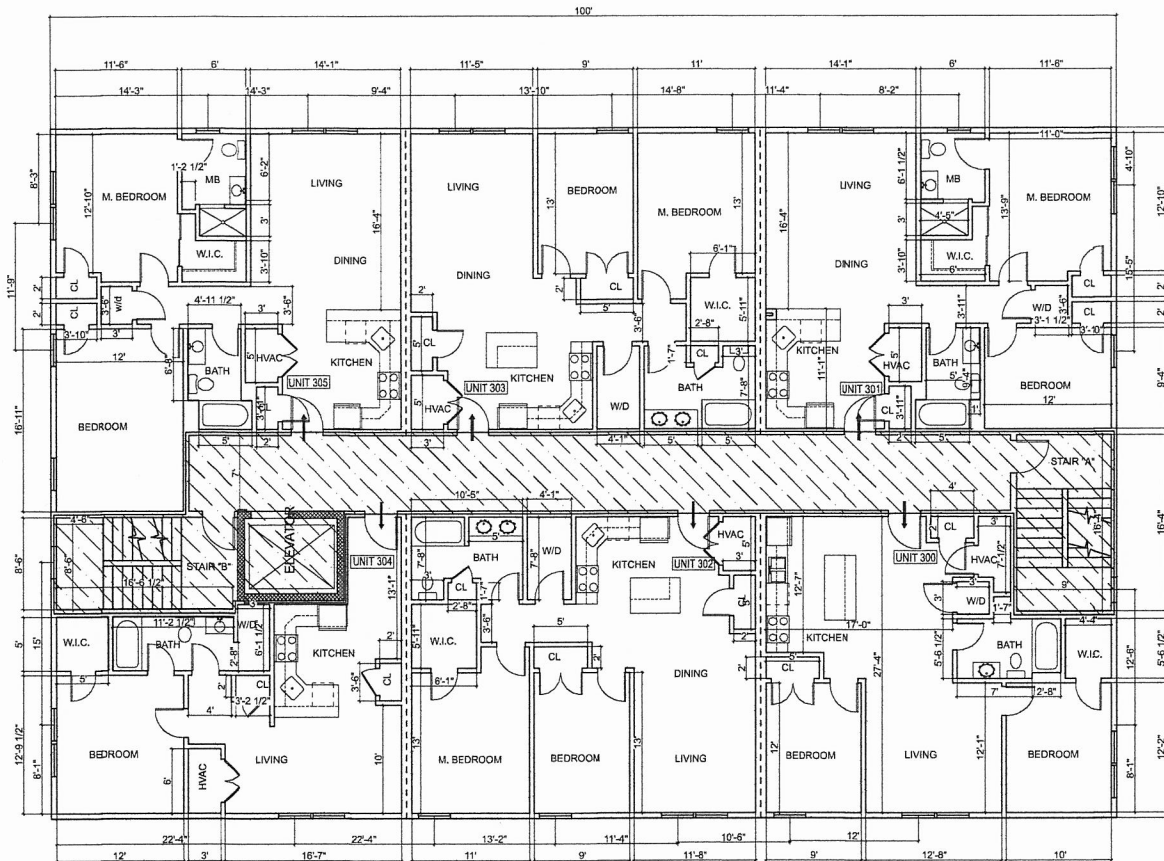
= Unit Separation Wall

Reserved for Registry Use

I hereby certify that this plan shows the unit designation of the unit being conveyed and of immediately adjoining units, and that it fully and accurately depicts the layout of the unit, its location, unit number and dimensions of the units numbered 100, 101, 102, 103, 104, 105, 200, 201, 202, 203, 204, 205, 300, 301, 302, 303, 304, 305, 401, 402, 403, 404, & 405 as built, approximate area, main entrance and immediate common area to which it has access, in building at 693 Western Ave as built, and that this plan has been prepared in accordance with the Registry of Deeds and the Commonwealth of Massachusetts.

693 Western Ave Condominium

693 Western Ave, Lynn, Massachusetts 01905
August 29, 2019



THIRD FLOOR

SCALE: $\frac{3}{16}" = 1'-0"$

THIRD FLOOR - COMMON AREA
992 SQ. FT.

UNIT 300 - THIRD FLOOR
838 SQ. FT.

UNIT 301 - THIRD FLOOR
926 SQ. FT.

UNIT 302 - THIRD FLOOR
929 SQ. FT.

UNIT 303 - THIRD FLOOR
927 SQ. FT.

UNIT 304 - THIRD FLOOR
685 SQ. FT.

UNIT 305 - THIRD FLOOR
1,021 SQ. FT.

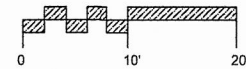
COMMON AREA - FLOOR AREA

BASEMENT	6,400 SQ. FT.
FIRST FLOOR	1,060 SQ. FT.
SECOND FLOOR	992 SQ. FT.
THIRD FLOOR	992 SQ. FT.
FOURTH FLOOR	963 SQ. FT.

TOTAL: 10,407 SQ. FT.

FLOOR PLANS

Scale: $\frac{3}{16}" = 1'-0"$

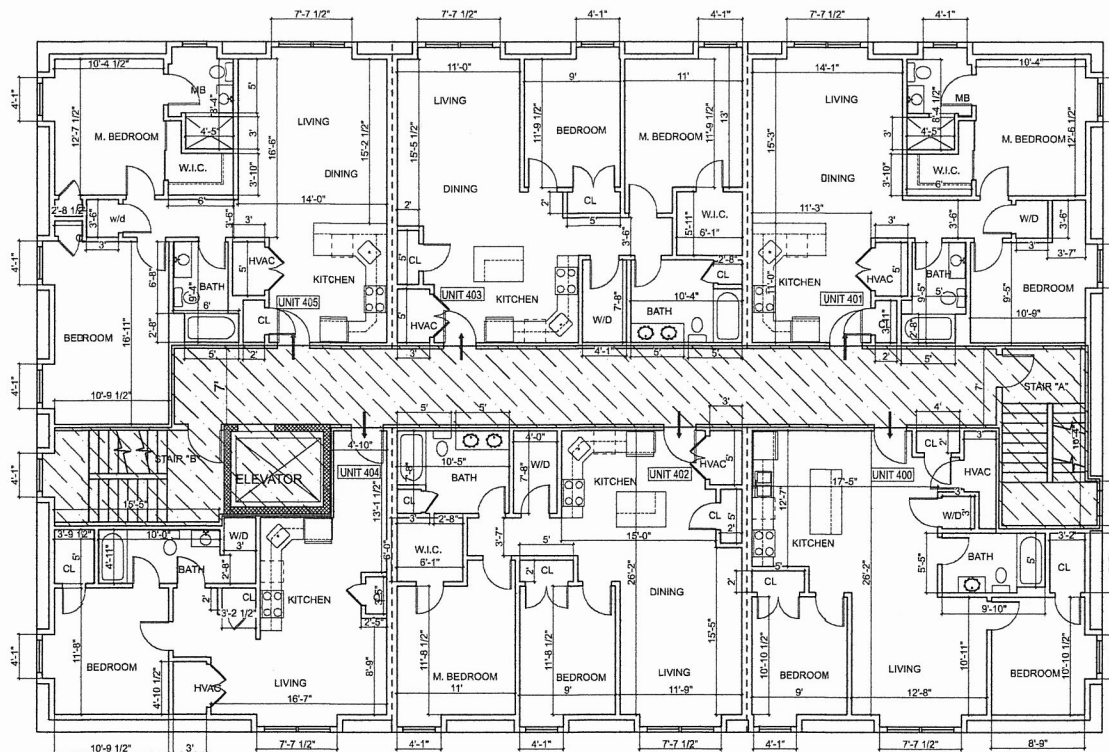


= Common Area

= Unit Access

= Unit Separation Wall

Reserved for Registry Use



FOURTH FLOOR

SCALE: $\frac{3}{16}" = 1'-0"$

FOURTH FLOOR - COMMON AREA
963 SQ. FT.

UNIT 400 - FOURTH FLOOR
795 SQ. FT.

UNIT 401 - FOURTH FLOOR
884 SQ. FT.

UNIT 402 - FOURTH FLOOR
911 SQ. FT.

UNIT 403 - FOURTH FLOOR
911 SQ. FT.

UNIT 404 - FOURTH FLOOR
634 SQ. FT.

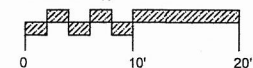
UNIT 405 - FOURTH FLOOR
976 SQ. FT.

COMMON AREA - FLOOR AREA	
BASEMENT	6,400 SQ. FT.
FIRST FLOOR	1,060 SQ. FT.
SECOND FLOOR	992 SQ. FT.
THIRD FLOOR	992 SQ. FT.
FOURTH FLOOR	963 SQ. FT.

TOTAL: 10,407 SQ. FT.

FLOOR PLANS

Scale: $\frac{3}{16}" = 1'-0"$



= Common Area

= Unit Access

= Unit Separation Wall

Reserved for Registry Use

I hereby certify that this plan shows the unit designation of the unit being conveyed and of immediately adjoining units, and that it fully and accurately depicts the layout of the unit, its location, unit number and dimensions of the units numbered 100, 101, 102, 103, 104, 105, 200, 201, 202, 203, 204, 205, 300, 301, 302, 303, 304, 305, 401, 402, 403, 404, & 405 as built, approximate area, main entrance and immediate common area to which it has access, in building at 693 Western Ave as built, and that this plan has been prepared in accordance with the Registry of Deeds and the Commonwealth of Massachusetts.

693 Western Ave Condominium

693 Western Ave, Lynn, Massachusetts 01905
August 29, 2019